



PRODUCT DATA

ePBX-100A IP-PBX

Busy Lamp Filed

Caller ID Identification Restriction

1GB CF Card



Welltech Computer Co., Ltd. was founded in 1988 in Taipei, Taiwan with the aim of linking people and the technologies, and has been an integral part of the community for over a decade. Our company is committed to promoting better Communications and Networking solutions to our customers through our strong knowledge and expertise in Voice over IP.

As the leading company in VoIP in Taiwan and with years of experience in H.323 and SIP protocol, Welltech has successfully developed FXO and FXS gateways, IP-Phone, E1/T1 Trunk gateway, SIP Proxy Server, Value added service server, USB phone and softphone and become a VoIP expert.

The voice quality and total solution providing ability are the reason why Welltech VoIP products are very popular in the market. From CPE side small gateways to CO side Solution, Welltech provided total VoIP solution to SOHO, multi-national corporations (MNCs), ITSP and carrier market. The new product, router integrated with voice over IP functions that support SIP protocol, is compliance with future communication trade.

PRODUCT DATA

Introduction

The Welltech ePBX-100A is the next generation IP PBX system for small enterprise. It is also designed to operate on a variety of VoIP applications, such as auto-attendant, voice conference, call transfer, call pick up and IP-based communications. With the tiny box, small to medium enterprise or homes can use it to access the Internet and to make VoIP phone calls.

Customers could select different suite and optional products to meet their request. To Integrate with WellGate 3804A/3802A to provide PSTN connection, IP Phone LP-388, LP-399, LP-305 and WellGate 3504A/3502A can provide extensions. With flexible and full functionality, Welltech ePBX-100A provided a complete transition from traditional PABX to the new generation IP-PBX.

Benefits

Small Office & SOHO upgrade to IP-Office

Setup WG2608/35xx to co-work with ePBX-100A(IP-PBX), to realize IP-Office.

Saving Communication Cost

Setup the other ePBX-100A in remote branch to make FREE call between HQ and Branch. And, HQ can through remote branch's FXO gateway to PSTN, only charge local call fee.

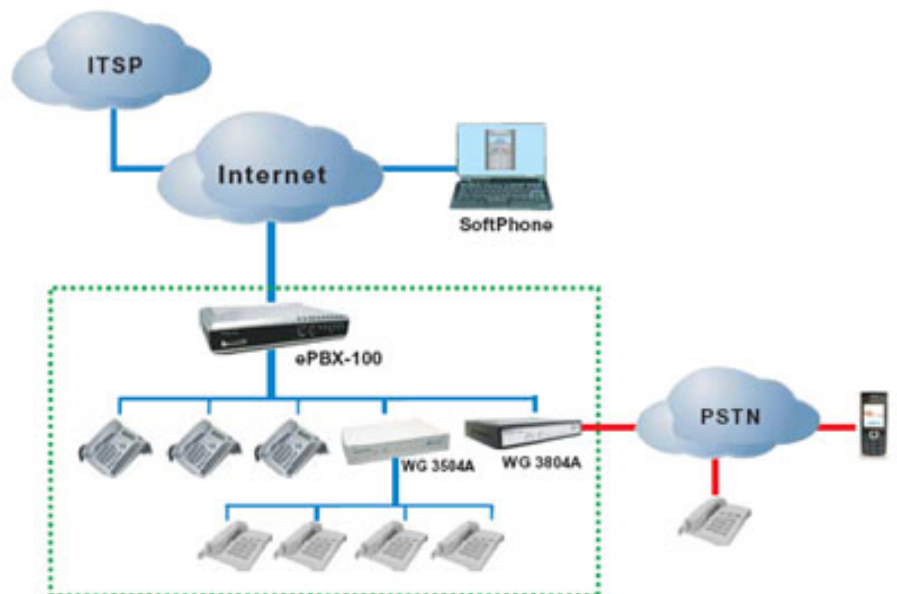
Rich Telephony Features

Enhanced Telephony Features, like as CLIR, BLF, Flexible Dial Plan etc.

Go into NGN

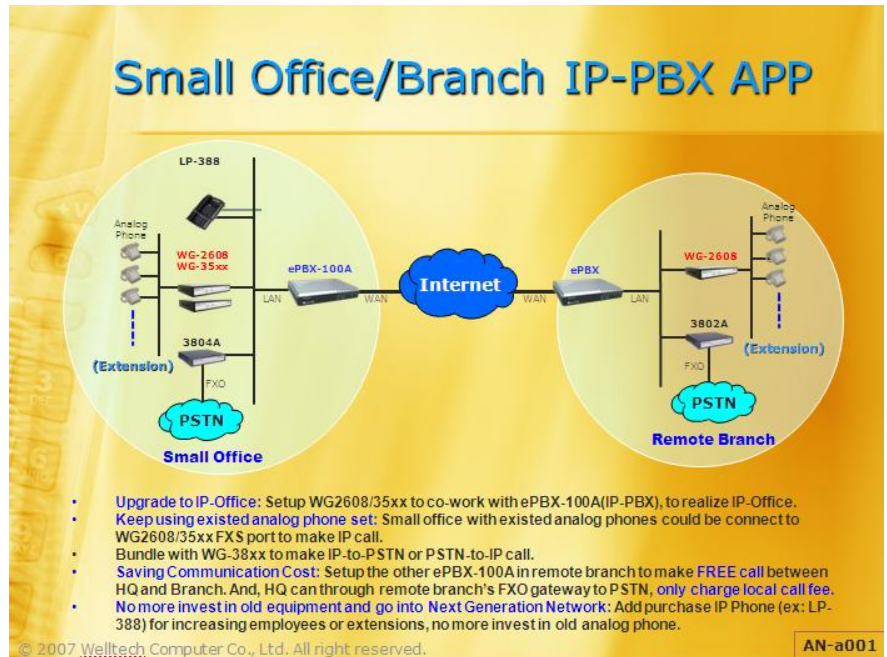
Add purchase IP Phone (ex: LP-388) for increasing employees or extensions, no more invest in old analog phone

Application



PRODUCT DATA

Application



Physical Interface

Ethernet port (RJ-45, 10/100 base-T)

- 1-WAN port, for connect to Router, ADSL/Cable modem, and Leased Line
- 1-LAN port, for connect with PC or other network devices.
- AUTO-MDI/MDI-X

AC power Jack

Reset Key (Factory Default)

LED Indicator (Power/Status/Alarm/SIP trunk/CDR/NET/WAN/LAN)

Specification

IP Network connection

- Static IP
- DHCP Client (RFC 2131)
- PPPoE Client (RFC 2516)
- DNS Client
- Bridge (WAN<->LAN)
- STUN Client
- TCP/UDP (RFC 793/768)
- RTP/RTCP (RFC 1889/1890)
- ICMP (RFC 792)
- SNTP (RFC 2030)
- HTTP Server

PRODUCT DATA

Specification

IP Telephony (VoIP)

SIPv2 (RFC 3261)

- Primary / Secondary register by IP or URI (Number & Text)
- Outbound proxy setting for increasing Performance, Productivity, and security
- Asterisk based

Voice Codecs:

- G.711 (a-Law/u-Law)
- G.729

FAX transmission: g.711 pass-through

Auto-Attendant: Office/Holiday/Special Greeting

Voice Mail System (VMS):

- Email Notice for new Voice Message
- Support MWI (Message Waiting Indicator)

3-way Conference Bridge

Call Features

- Call Hold / Music on Hold
- Call Transfer (Blind & consultant)
- Call Forward (Unconditional / No Answer / Busy / Unavailable)
- Call Waiting
- Call Pickup
- Call Park
- Call Camp-On
- DND (Do Not Disturb)

Dial Plan (Call Routing):

- LCR (Least Cost Routing)
- Specific route for Trunk Access

DTMF: In-band, Out-of-band (RFC 2833), and SIP-Info

BLF (Busy Lamp Field): Compatible with Asterisk

Caller ID Display

CLIR (Caller ID Identification Restriction)

Capacity:

- 13 Concurrent Calls
- 13 RTP

Setting and Management

Setting & Upgrad:

- Web Browser (HTTP)
- Setting Parameter Import / Export

CDR Save & Export

Greeting Record by Phone-set

Software version info

SNTP auto update Date & Time



Model No. ePBX-100A

PRODUCT DATA

Environmental

Dimension: 175(W)*125(H)*32(D) mm

Weight: 250g (unit)

Operating Temp. & Humidity

- Temp.: 0°C~45°C (32°F~113°F)
- Humidity: 10%~85% relative humidity, non-condensing

AC Power Adaptor:

- INPUT: AC 100~240V, 50/60Hz
- OUTPUT: DC 12V, 1.0A

Regulatory: FCC (Part 15, Class B) & CE

Order Information

	ePBX-100A
Concurrent Calls	13
RTP	13
CF card	1GB

Disclaimer

This document contains product specifications, application examples, and techniques for promotion purpose. Welltech reserves the rights to change product features and functionalities without prior notice at any time. These changes may involve changes to the described solutions over time.

Copyright Notice

This document contains proprietary information that is to be used only by customers. Any unauthorized disclosure, copying, distribution, or use of this information is prohibited.

Welltech Computer Co., Ltd.

13F-4, No. 150

Jian-Yi Road, Chung-Ho City

Taipei, Taiwan

E-mail: voipinfo@welltech.com

Web: <http://www.welltech.com>